

Living in the Wildland Urban Interface

Wildland fire is a natural and recurring phenomenon.

As development spreads into wildland areas, we are at a greater risk of the negative impacts of wildland fire spreading to homes.

When wildland fire spreads into neighbourhoods, homes, decks, and wood fences provide dense fuels that can quickly overwhelm the firefighting efforts.



Conducting a home assessment to identify combustible materials on or around your property will identify actions you can take to reduce your risk to damage or loss from wildland fires.



WHAT'S NEXT?

Contact FireSmart Canada or the FireSmart Liaison in your area for program availability or for more information on how to get started.

Visit our website or scan the QR code below:

www.firesmartcanada.ca



The FireSmart Advanced Home Assessment Program



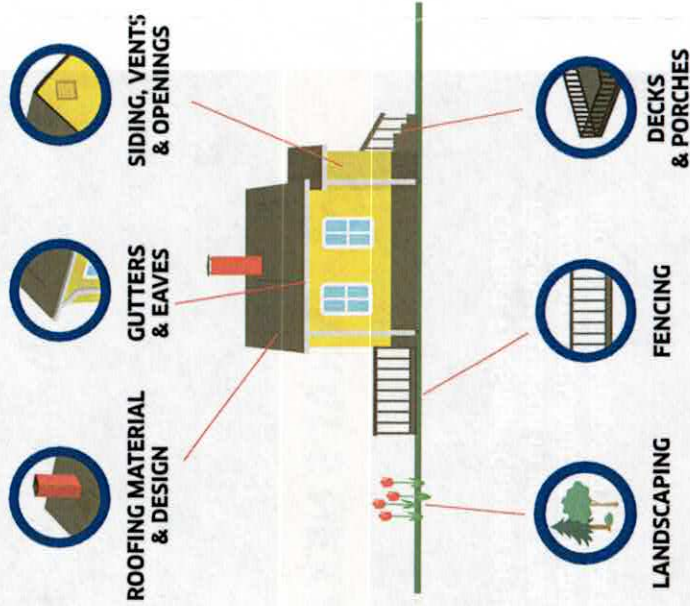
Reduce your property's risk to damage by wildland fire!

If you have already completed the Home Ignition Zone self-assessment or used the FireSmart Begins at Home app,



your next step may be to contact FireSmart for a voluntary property assessment through the **Advanced Home Assessment Program**.

Preparing for wildland fire is a shared responsibility!



A **trained assessor** will visit your property and review **key areas** within the Home Ignition Zone (the area within 30 metres of your home and structures).



The assessment report you receive will highlight areas of risk and will provide specific recommendations of actions and upgrades you can take to increase your property's resilience to wildland fire.

HOME IGNITION ZONE



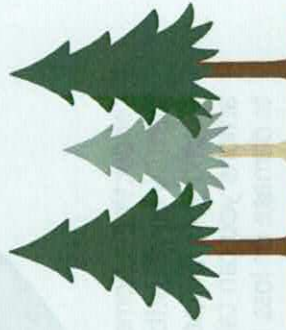
IMMEDIATE ZONE
0 m to 1.5 m

A minimum 1.5 metre non-combustible surface should extend around the entire home and any attachments, such as decks.



INTERMEDIATE ZONE
1.5 m to 10 m

This should be a fire-resistant area, free of all materials that could easily ignite from a wildland fire.



EXTENDED ZONE
10 m to 30 m

Thin and prune evergreen trees to reduce hazards in this zone. Regularly remove accumulations of fallen branches and dry grass/needles to eliminate potential surface fuels.